



# D07 - 09E

## Mass Flow Controller D07 Series

### Features

High performance elastomer sealed MFC with advanced analog electronics.

- Up to 250 slm full scale
- Drop-in replacement for most standard MFCs
- CE Mark compliant
- Ten years of production experience



### Applications

Mass flow controllers accurately measure and control mass flow. They are widely applied in the manufacturing of semiconductors, petrochemicals, pharmaceuticals, gases and optical fibers, as well as in the vacuum deposition, metallurgy, analytical instrumentation and gas distribution industries.

### Calibration

MFCs are calibrated with Nitrogen  
Reference Standards....Standard temperature – 273.15K  
Standard pressure – 101325 Pa

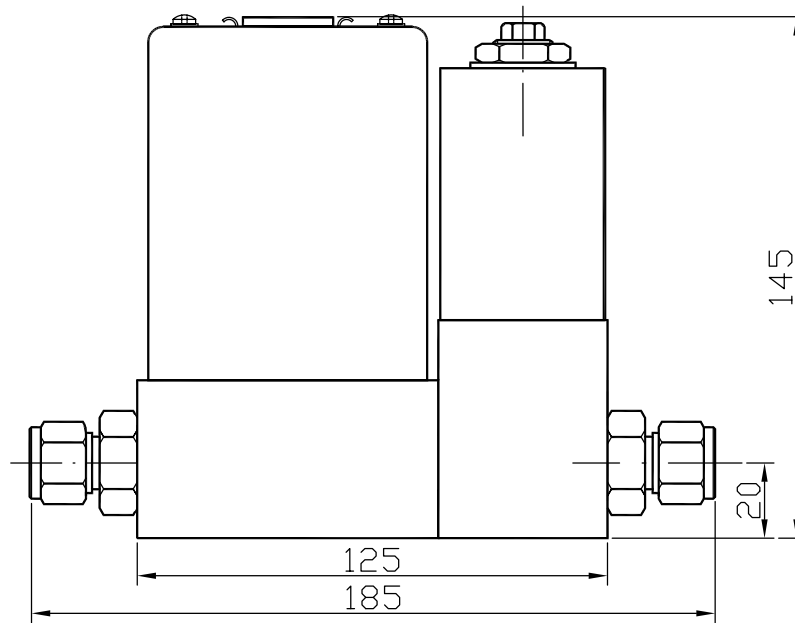
### Input and Output

Input voltage required.....50mA@+ 15V / 400mA@- 15V  
Analog input and output signal.....0 – 5 VDC

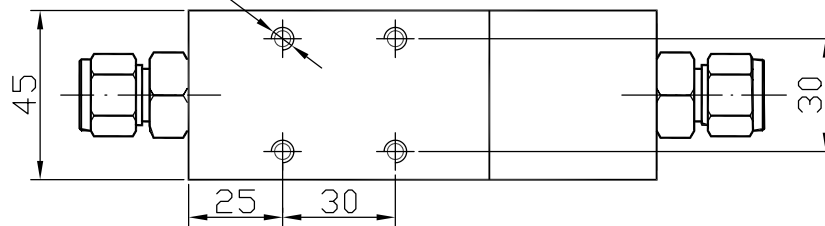
### Specifications

Full scale flow range (N <sub>2</sub> equivalent).....	20 – 250 slm
Control range.....	2% – 100%
Valve type.....	Electromagnetic
Valve rest position.....	Normally Closed
Accuracy.....	± 2% F.S.
Linearity.....	± 2% F.S.
Repeatability.....	± 0.2% F.S.
Step response time .....	1 – 4 sec
Operating temperature.....	5 – 45°C, Non-condensing
Max inlet pressure.....	2,750 KPa (400 psig)
Normal operating pressure differential.....	
20 – 30 slm.....	50 – 275 KPa (7 – 40 psid)
50 – 150 slm.....	100 – 275 KPa (15 – 40 psid)
200 – 250 slm.....	135 – 275 KPa (20 – 40 psid)
Leak integrity.....	< 1 × 10 <sup>-8</sup> sccs He
Wetted materials.....	SS316L, Viton, Silicone Rubber, NBR
Static seals.....	Viton, Silicone Rubber, NBR
Dynamic seals.....	Viton, NBR, Teflon
Fitting options.....	
VCR.....	1/2" and 3/8" Male
Swagelok.....	3/8" and 10 mm
Weight.....	2.6 Kg

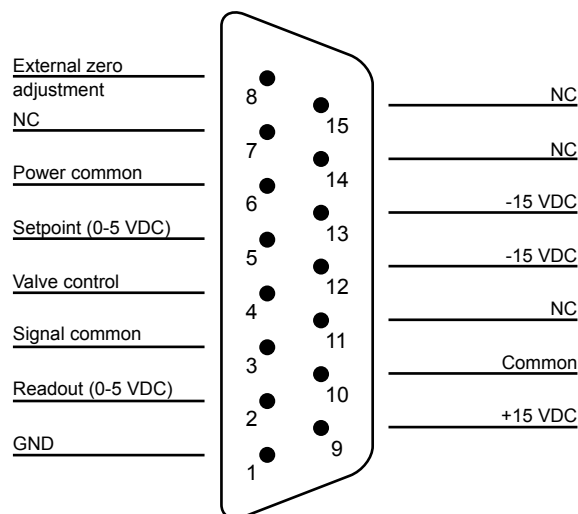
# Dimensions



4-M5, deep 6



# Pinout configuration



Connector 15-pin, type "D", male