

Filter Series

Q+MF3 – Ultra High Purity Filter

Features

Design

Essentially zero outgasing.
Standard Moduline dimensions.
Various fitting configuration.
All tube connections are TIG orbital welded.

Materials

Wetted area..... 316L Stainless Steel
Rugosity..... electropolished, Ra0.18µm (7µin)

Verification & Packaging

100% inspection with boroscope.
Vacuum sealed double packaging with N₂ purge.

Ratings

Specifications

Orifice size (internal)..... 5 mm (0.19 in)

Particle Retention Rate

@ 5 slm..... > 99.9999999%
@ 15 slm..... > 99.99999%
Particle diameter..... > 0.01 µm

Temperature

Inert gas..... 400°C max @ 121 bar
Corrosive / reactive gas..... 50°C max @ 207 bar

Flow Rating

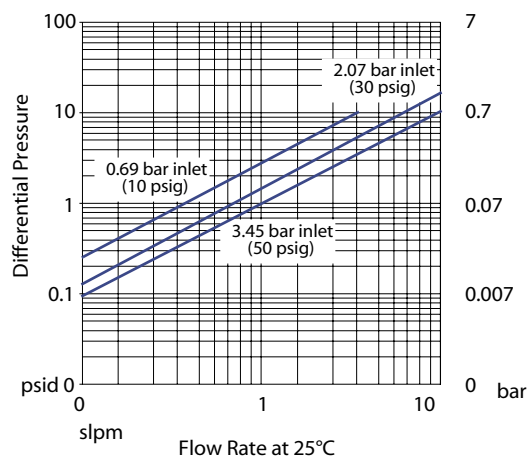
Maximum flow..... 100 slm

Pressure Rating

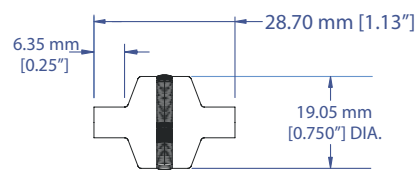
Operating..... Vacuum to 207 bar
Differential pressure..... 35 bar max @ 100°C

Helium Leak Rate

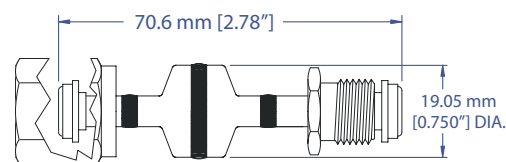
Individually tested..... < 9.10⁻⁹ atm cm³/s



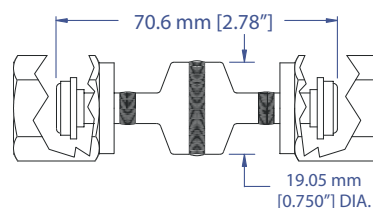
1/4" BUTT WELD INLET/OUTLET



1/4" MALE GASKET SEAL INLET
1/4" FEMALE GASKET SEAL OUTLET



1/4" FEMALE GASKET SEAL IN/OUTLET



Accessories Series

Q + MF3 Filter

Part Number Description

Q57604 [X] [Y] [Z]

[X] - Fitting Configuration

- [1] Standard Moduline ¼" VCR
- [2] Female ¼" VCR
- [4] Swagelok ¼"
- [5] Swagelok 6mm
- [9] Special configuration, specify [Y] [Z]

[Y] - Inlet Fitting Type

- [B] Female ¼" VCR
- [C] Male ¼" VCR
- [F] Swagelok ¼"
- [G] Swagelok 6mm
- [W] Welded butt end

[Y] - Inlet Fitting Type

- [B] Female ¼" VCR
- [C] Male ¼" VCR
- [F] Swagelok ¼"
- [G] Swagelok 6mm
- [W] Welded butt end